

DEAN
CLARKE
HOUSE

—

EXETER
DEVON



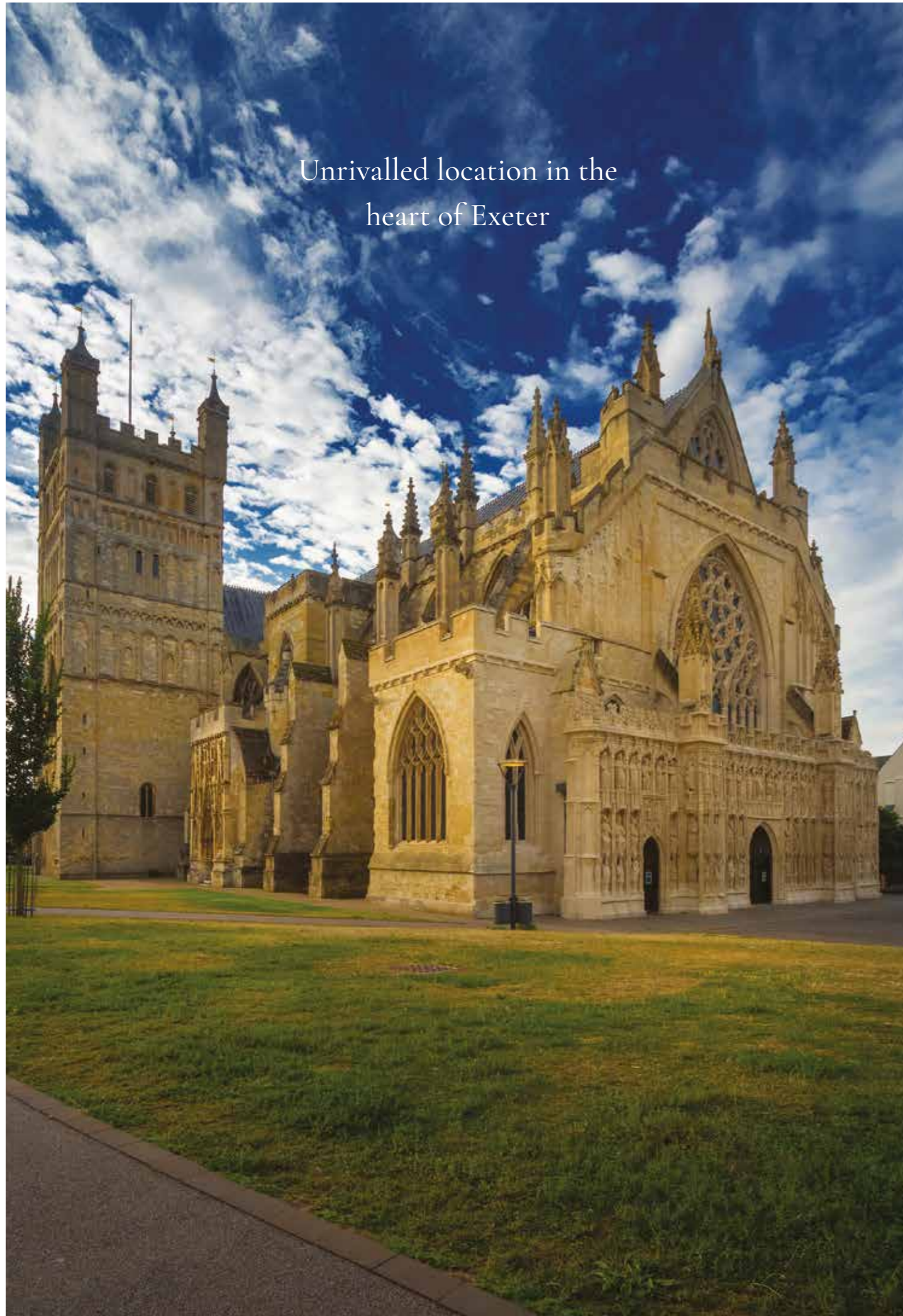
BURRINGTON
ESTATES

DEAN
CLARKE
HOUSE

OPULENT,
EXCLUSIVE
SERVICED
OFFICES AND
FITTED TO
A PREMIUM
STANDARD



Unrivalled location in the
heart of Exeter



LOCATION

MAYFAIR STANDARDS IN THE HEART
OF SOUTH WEST ENGLAND

This prominent Grade II* Georgian property has been transformed into the most luxurious residential and business accommodation in Exeter. The development has been designed to bring the best of Mayfair to Exeter.

Set in the heart of the city's elegant Georgian business quarter and once serving as the Royal Devon and Exeter Hospital, the prestigious Dean Clarke House occupies an exclusive position on an attraction tree-lined avenue just a stone's throw from the city's many amenities and travel links.

Exeter is unparalleled in the region for the choice of things to do, with a wealth of hidden gems to discover and a vibrant, chic social scene.

More than 2,000 years of history sit on the doorstep, including the remains of the old city walls opposite Dean Clarke House, forming part of the City Wall Trail, one of many historical walks which lead around the city.



London - 170 miles
Exeter St Davids Train Station - 1.6 miles
Exeter Central Train Station - 1 mile*
Exeter Airport - 6.3 miles

DEAN CLARKE HOUSE

Exclusive serviced offices

Opulent, exclusive and fitted to a premium standard, the serviced offices in Dean Clarke House are unmatched in the area.

Dean Clarke House remains a flagship development for Burrington Estates, epitomising the vision to bring Mayfair standards to the heart of Southwest England.

The offices, meeting rooms and conference facilities reflect this in their high-quality finish and superb facilities. Perfect for the ambitious start up to boutique agency looking to create an impression in the heart of the city.



THE PRESTIGIOUS DEAN CLARKE HOUSE IS
SET IN THE HEART OF THE CITY'S ELEGANT
GEORGIAN BUSINESS QUARTER



DEAN CLARKE HOUSE

Serviced offices

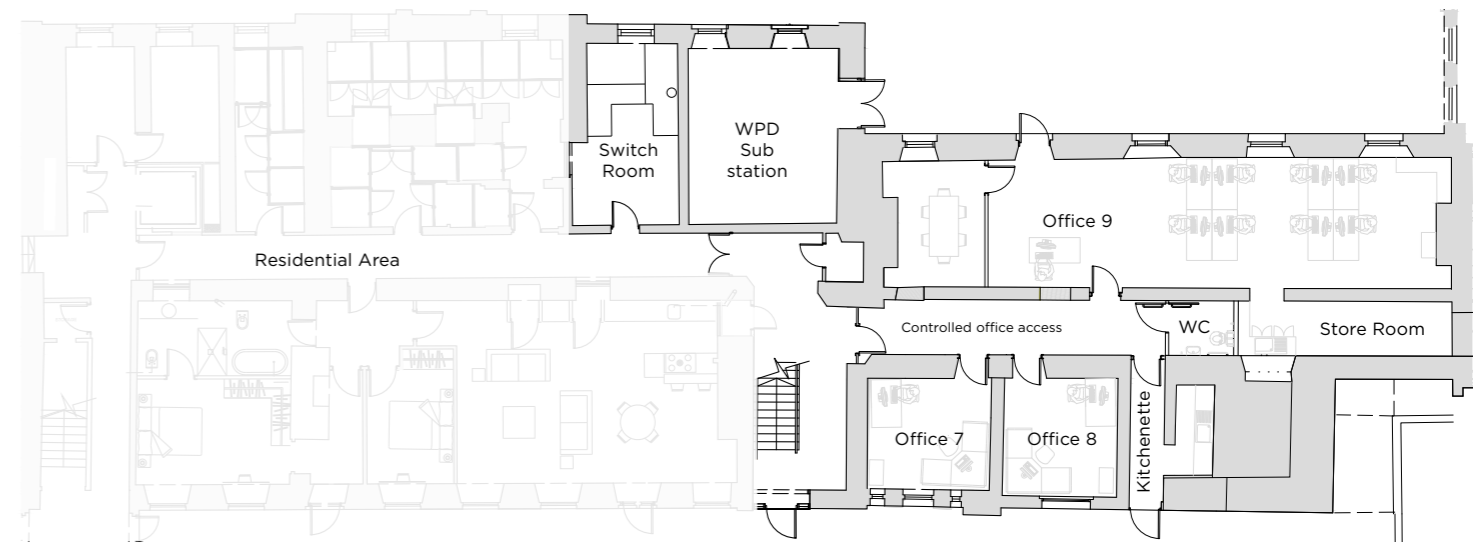
The work hub comprises nine premium offices, which are fitted out to a high standard and offered fully-furnished.

Occupiers have shared use of a light and spacious club room and can also book exclusive use of a fully equipped conference room.

Each room can accommodate between 3 and 14 workstations, and rooms can be combined to create larger workspaces.

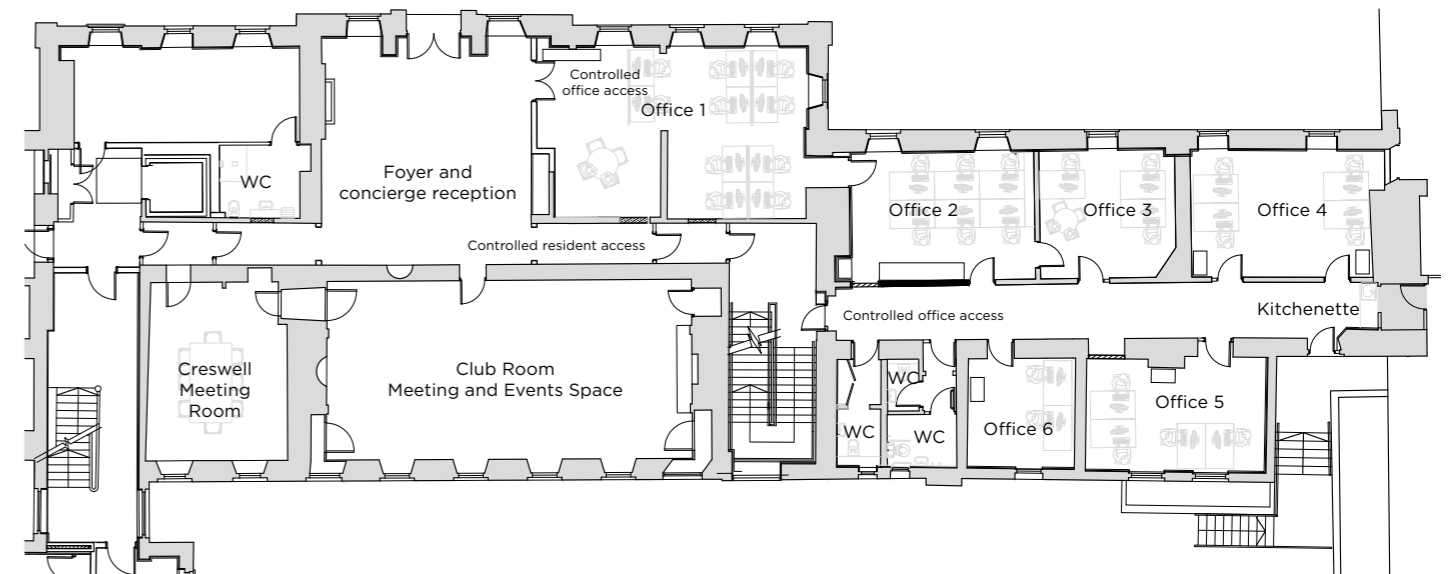
Tenant Services:

- Concierge reception service in normal office hours, for greeting visitors, receiving post/parcels and booking meeting rooms.
- 24-hour access to the building by means of electronic door fobs
- Complimentary use of the Club Room, plus free reservations of the conference room
- Fibre optic internet
- Hot drinks supplies to the shared tea points and in the Club Room
- Shared use of courtyard gardens to rear of Dean Clarke House
- Cleaning of offices and communal areas



BASEMENT FLOOR

BASEMENT FLOOR	Sq(m)
Office 7	13
Office 8	13
Office 9	69



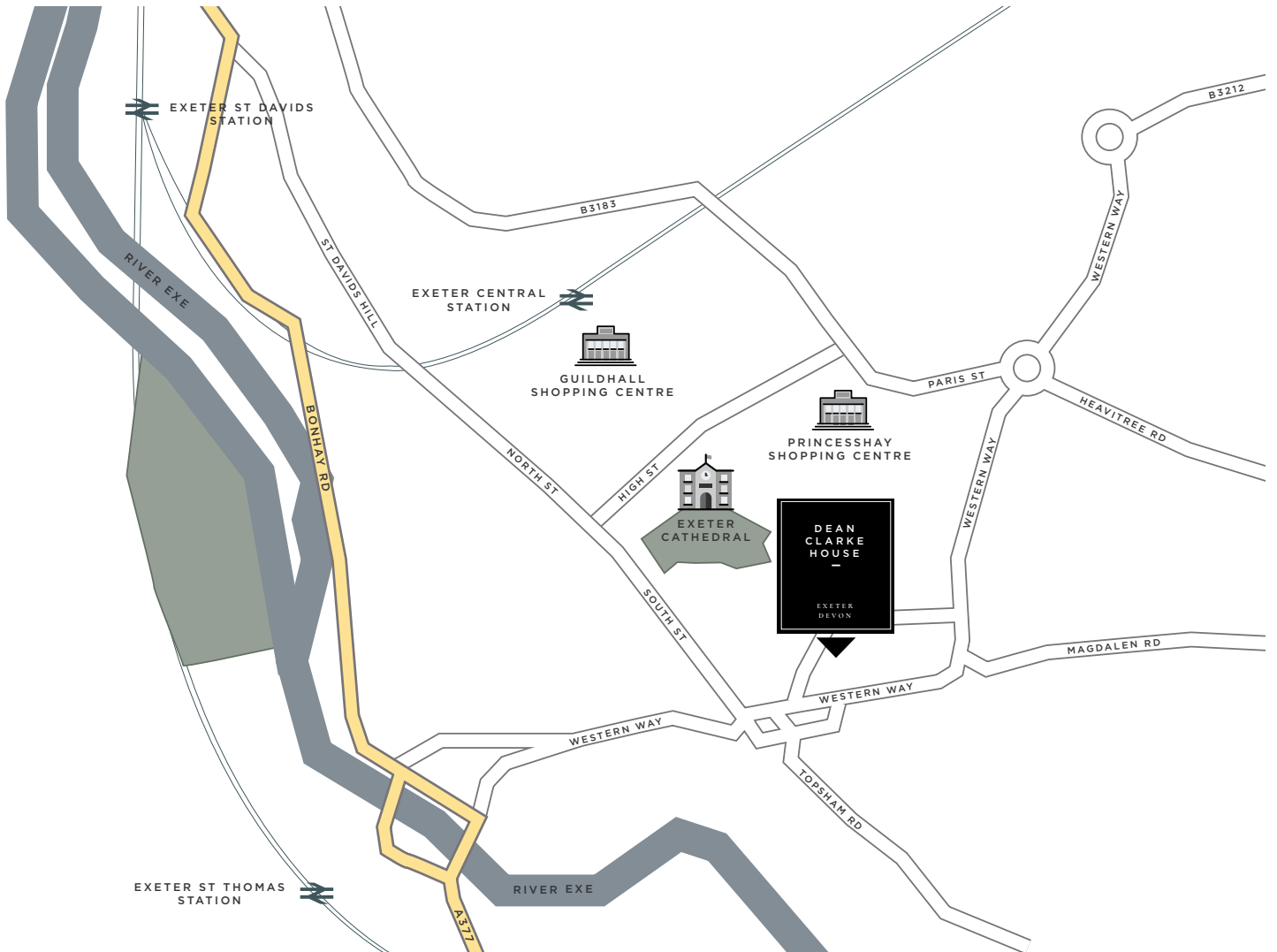
GROUND FLOOR

GROUND FLOOR	Sq(m)
Office 1	49
Office 2	25
Office 3	19
Office 4	26
Office 5	22
Office 6	13
Creswell Room	28
Club Room	72

DEAN CLARKE HOUSE



DEAN CLARKE HOUSE,
SOUTHERNHAY EAST
EXETER, DEVON, EX1 1AP



BURRINGTON
ESTATES

SECURE YOUR OFFICE

For more information or to request your pricing plan please contact us via:
commercial@burringtonestates.com
01392 640644
www.burringtonestates.com



STRATTON CREBER COMMERCIAL

20 Southernhay West, Exeter, EX1 1PR
For more information please contact us via:
Jonathan Ling: jonathan@sccexeter.co.uk
Vicky Bandyszewska: vicky@sccexeter.co.uk
01392 202203