



To let

Suite B, Tourism House, Pynes Hill,
Rydon Lane, Exeter, Devon, EX2 5WS

Viewing by prior appointment
with Jonathan Ling

(01392) 202203

jonathan@sccexeter.co.uk

First floor office suite in modern building

1,714 sq.ft (159.3 sq.m)

8 dedicated parking spaces plus shared visitor spaces

To let: £23,500 p.a.

Location

Tourism House is situated on the established Pynes Hill Office Campus, which is accessed off Rydon Lane approximately 1 mile from Junctions 29 and 30 of the M5. The city centre is around 3 miles away and there are regular bus links to the city centre and Park & Ride services. The nearest railway station is Digby & Sowton, providing services into the city and to locations beyond.

Description

Tourism House is multi-let office building where occupiers include insurance brokers Rothwell & Towler and publishers David & Charles. The building is set on a site offering mature landscaping and ample parking. The building is adapted for disabled access and has spacious common areas.

Suite B is on the first floor, with access of a spacious landing and has shared use of male, female and disabled WCs as well as a shower room. The suite has windows to three elevations and is currently laid out as an open-plan office space plus meeting room, private office and further office/reception area. A kitchen leads off the main office. See floor plan overleaf. All walls within the suite are non-structural and the layout can be altered to suit occupiers' requirements.

Features of the offices include:

- Suspended ceilings with recessed category-2 lighting;
- Floor boxes offering power and data sockets, plus additional wall-mounted sockets;
- Gas-fired central heating.

Externally the suite has 8 allocated parking spaces, plus shared use of visitor spaces in front of the building.

Accommodation

Net internal area of 1,714 sq ft (159.3 sq m).

Lease Terms

The suite is offered by way of a new lease on contributory full repairing and insuring terms (subject to a service charge). The initial annual rent is **£23,500 exclusive**. Other lease terms by negotiation.

Service charge

The landlord re-charges the costs of providing shared services, including heating to the suite, lighting and cleaning of common parts, landscaping and buildings insurance. The amount payable by Suite B is currently in the region of £4,900 per annum inclusive of buildings insurance, gas and water. Electricity to the suite is also re-charged by the landlord.

Business Rates

The unit and its allocated parking have a rateable value in the 2017 rating list of £18,000 and the rates payable in the year 2020/21 under are understood to be £8,982.00.

VAT

VAT is applicable to the rent and service charge.

Services

Mains electricity, gas central heating and water/drainage are connected to the suite and recharged by the landlord (see Service Charge).

Broadband connectivity

A report on the broadband services available at this property, and the relative speeds they may offer, is available on request.

Energy Performance Certificate

Assessed in band C.

Legal Costs

Both parties to bear their own legal costs in the transaction.

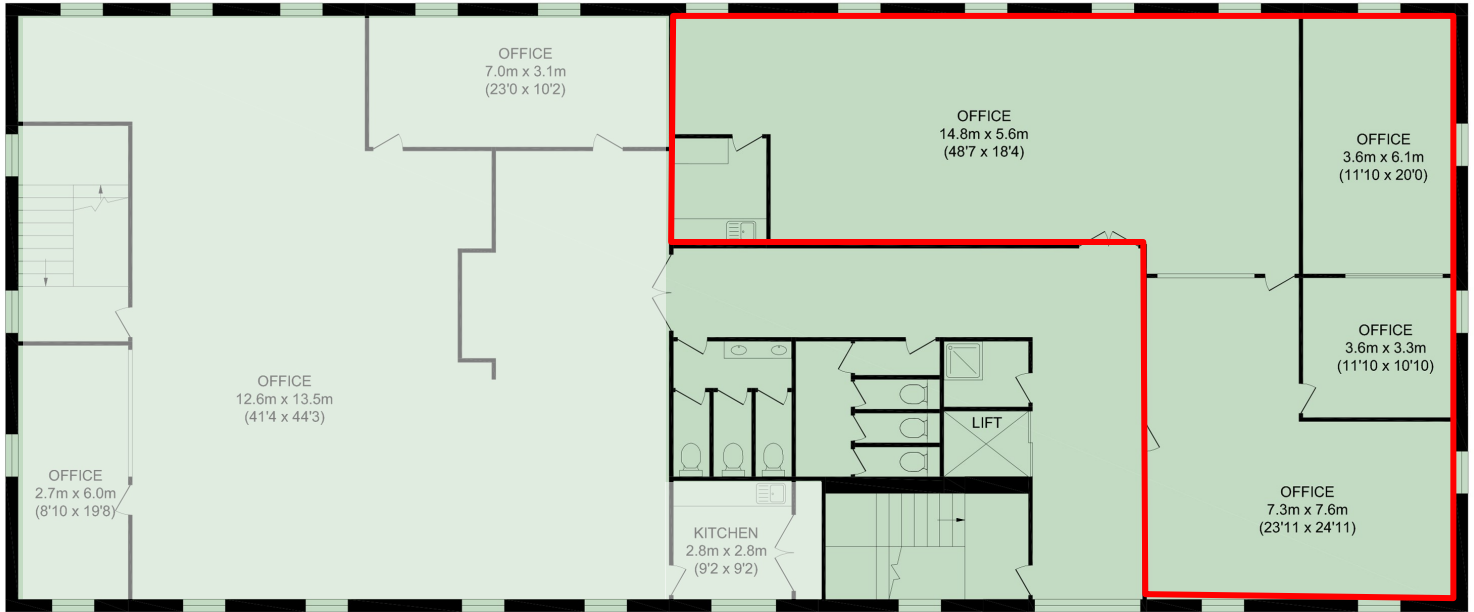
Viewing & Further information

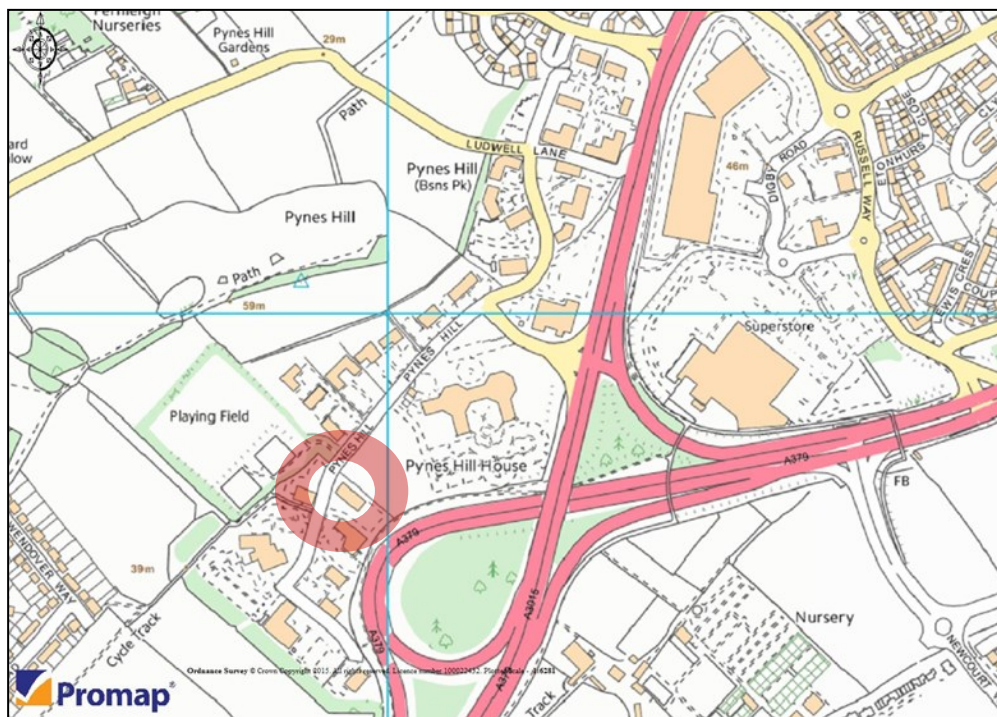
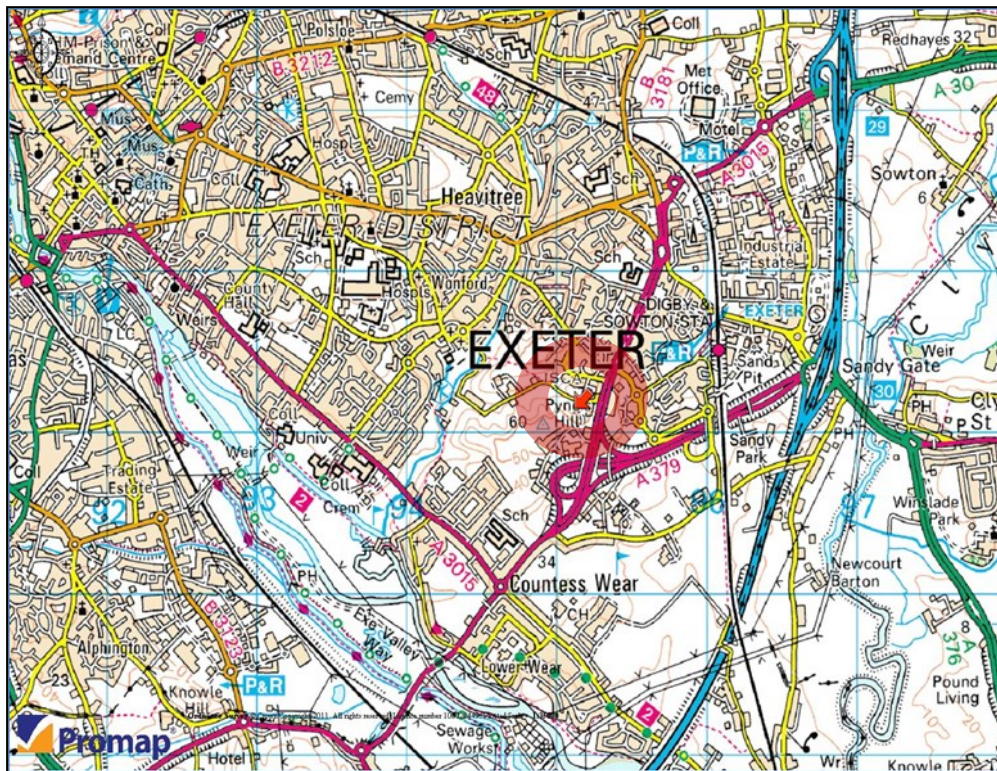
Strictly by appointment through the sole agents:

Stratton Creber Commercial
20 Southernhay West, Exeter, EX1 1PR

Contact: Jonathan Ling
Tel: (01392) 202203
Email: jonathan@sccexeter.co.uk







Exeter Office

20 Southernhay West, Exeter, EX1 1PR

T: (01392) 202203

F: (01392) 203091

E: info@sccexeter.co.uk

Stratton Creber Commercial for themselves and for the Vendors or Lessors of the property whose Agents they are, give notice that:

The particulars are set out as a general outline only for the guidance of intended purchasers or lessees, and do not constitute part of, an offer or contract;

All descriptions, dimensions, reference to condition and necessary permissions for use and occupation, and other details are given without responsibility and any intending purchasers or tenants should not rely on them as statements or representations of fact but must satisfy themselves by inspection or otherwise as to each of them;

No person in the employment of Stratton Creber Commercial has any authority to make or give any representation of warranty in relation to this property.